

CAD Drawings – Datasheet CA

Easy to use 2D drawing and room layout

A flexible design tool for laying out jobs e.g. Office spaces, Kitchens, Washrooms ...

- **Create room layout**
- **Add products**
- **Optimise**

The module provides full costing, drawings and supporting documents.

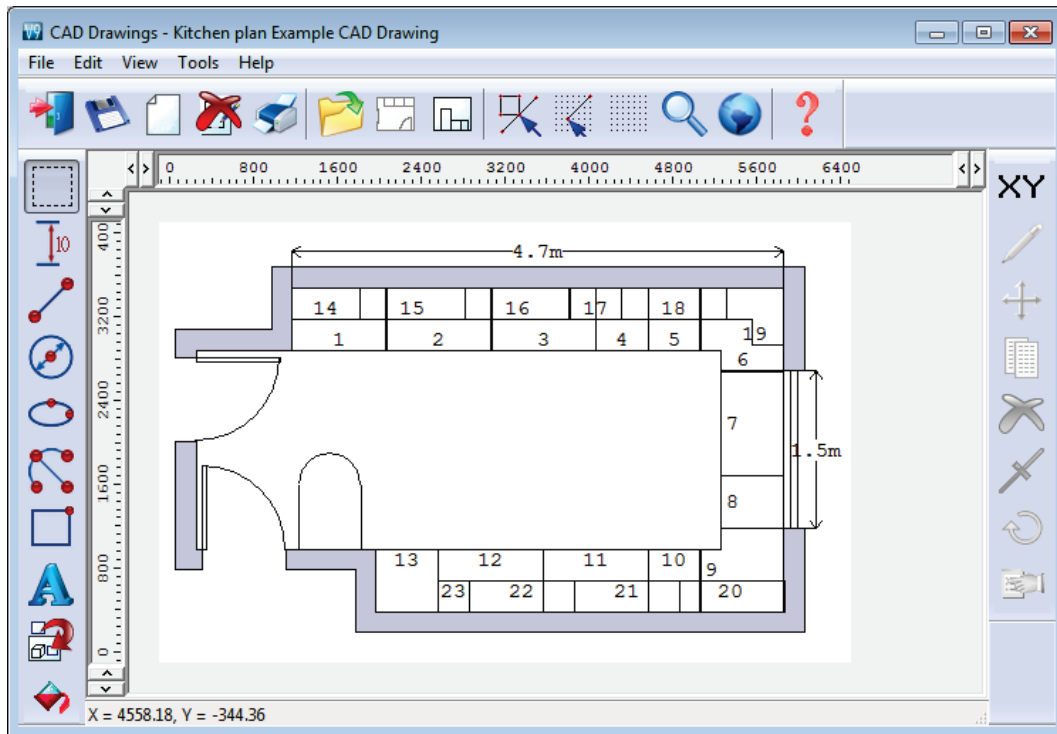
The module allows you to create a 2D drawing (plan) defining a space, for example a Kitchen, with walls, doors and windows. Products from the Product library can then be added to the plan and dragged into position.

Once the area is fully specified the program creates the product requirements list and then a cutting list and the items can be optimised and cutting patterns reviewed in the usual way.

The plan or Layout can be exported in DXF format.

CAD drawing library

Use the screen and integrated tools to produce a space or room layout and position products on the layout.

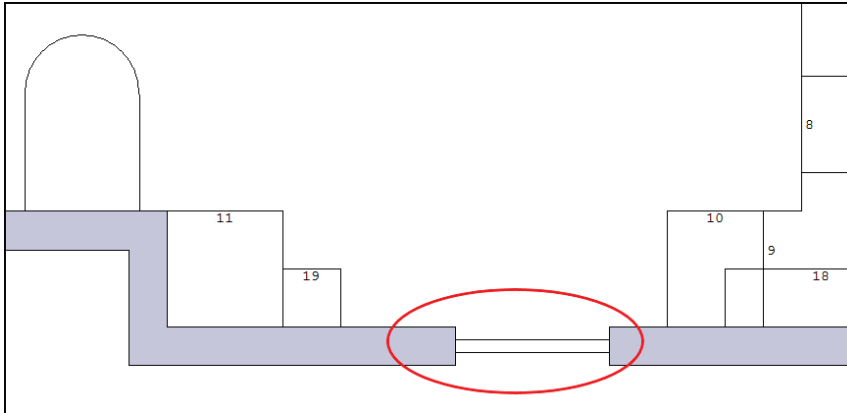


The usual drawing tools, arc, line, circle, ellipse, text ... are available.

In addition there is a special set of tools to allow for quick and accurate entry of the room details.

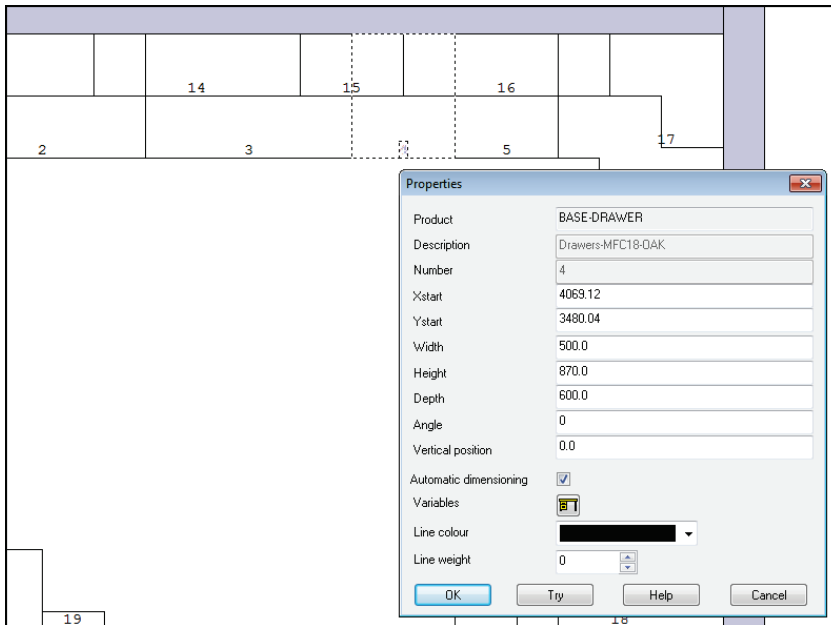
Wall, Door, Window

Here the Window tool is used to add a window,



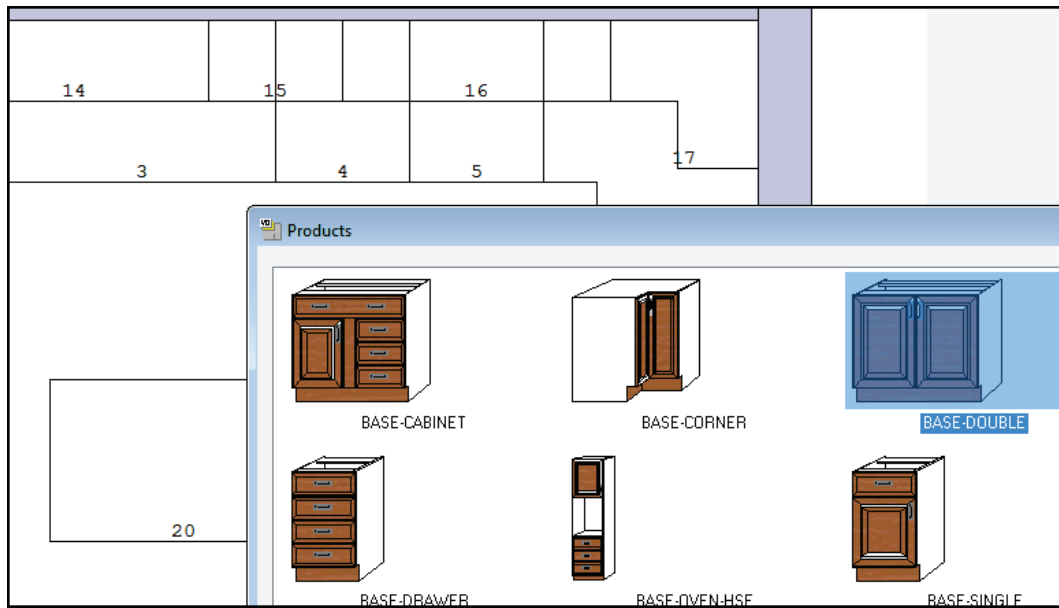
Products can be easily checked and re-positioned as necessary.

Details of each product are shown via the Properties pop-up



Right click on an item in the layout to view the properties.

Use the Product tool to add products to the drawing



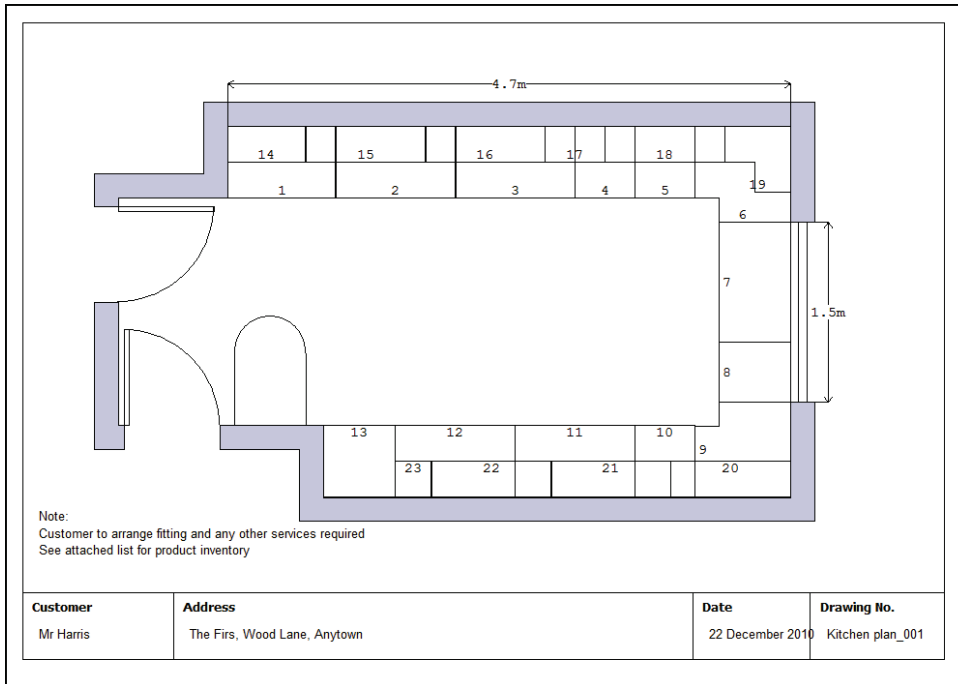
Click on a product to add it to a layout then snap the product into position.

The layout view can be switched between the plan view and an elevation along a selected wall.



This gives a further check of the fit and design.

Any drawing can be added to a diagram layout - so that a fully annotated drawing can be produced if required.



This drawing template can be fully customised.

Product requirements

Once the drawing is complete the product requirements can be calculated automatically by the program.

No	Code	Information	Product			Qty
			Width	Height	Depth	
1	BASE-CABINET	001 Base unit - cabinet	900.0	870.0	600.0	1
2	BASE-DOUBLE	002 Double base unit	1000.0	870.0	600.0	1
3	BASE-DOUBLE	003 Double base unit	1000.0	870.0	600.0	1
4	BASE-DRAWER	004 Drawers-MFC18-OAK	500.0	870.0	600.0	1
5	BASE-SINGLE	005 Single base unit	500.0	870.0	600.0	1
6	BASE-CORNER	006 Corner cabinet	800.0	870.0	800.0	1
7	BASE-SINK	007 Sink base unit	1000.0	870.0	600.0	1
8	BASE-SINGLE	008 Single base unit	500.0	870.0	600.0	1
9	BASE-CORNER	009 Corner cabinet	800.0	870.0	800.0	1
10	BASE-SINGLE	010 Single base unit	500.0	870.0	600.0	1
11	BASE-DOUBLE	011 Double base unit	1000.0	870.0	600.0	1
12	BASE-DOUBLE	012 Double base unit	1000.0	870.0	600.0	1
13	BASE-OVEN-HSE	013 Oven Housing	600.0	2350.0	600.0	1
14	WALL-SINGLE	014 Single wall unit	650.0	750.0	300.0	1
15	WALL-DOUBLE	015 Double wall unit	1000.0	750.0	300.0	1
16	WALL-DOUBLE	016 Double wall unit	1000.0	750.0	300.0	1
17	WALL-SINGLE	017 Single wall unit	500.0	750.0	300.0	1

The requirements are then ready for optimising in the usual way.

Alternatively the program can produce a full Quotation for the Products and Quotes module. The Quotation can be processed and optimised as required.

CAD Drawings summary

Products & Quotes typically requires one of the Optimising modules; LO, SO, PO, NE

Products & Quotes usually requires the PL module for parametric products

	PQ + PL
Product records	Unlimited
Customer records	Unlimited
Drawing library	•
External product drawings	•
Parametric products	•
Quotations	•
Job costing	•
Product costing	•
Flexible orders	•
Form & Label designer	•
Printed forms	•
Integrated local help	•