



Optimisation & Production Software  
Fast • Accurate • Powerful

We're here to help  
+44 (0)117 927 6353

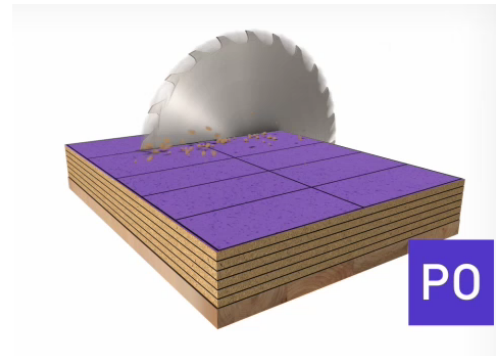
## Professional Optimiser

Home > Products > Professional Optimiser

Large scale production - with full cost control

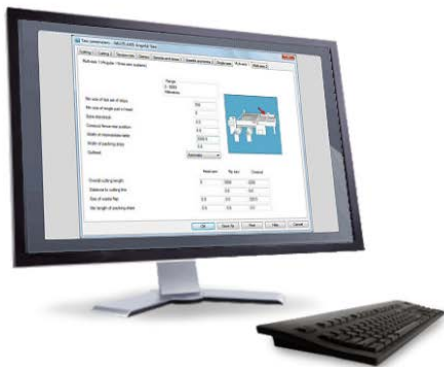
The Professional Optimiser has all the features of the Standard Optimiser and is designed for higher volumes of cutting with larger beam saws or an angular saw plant.

It has several additional optimisation algorithms for volume cutting, strip production (rip patterns and crosscut patterns separated), and full sheet (over production allowed to use up full sheets).



## Features and Benefits

- ▶ The PO module handles up to 20,000 lines (part types) per optimisation, and up to 99999 pieces per line.
- ▶ The optimisation is cost based and balances the increase in average cutting height and faster cutting time with the raw material used.
- ▶ Parts can be grouped and a limit placed on the maximum number of pallet groups that can be open at one time.
- ▶ Saw interface includes cutting time calculations and download for Holzma angular saws and three saw systems.
- ▶ Advanced parameters allow for parts to be assigned priority, and for the maximum number of different board sizes to be limited.
- ▶ Free cut analysis - determines the optimum position to cut a jumbo board into two sizes subject to maximum specified length.



## Magi-Cut is at the core

“ Magi-Cut is at the core of our cutting operation. Its ease of use, speed and reliability gives us the confidence to offer a level of service on quotes and bespoke orders that is market leading. A really powerful versatile tool that we would not be without //

Bob Trice - Robert Horne